

Ready for Learning - Ready for Life -

Newton Hill Community School Update - Term 2 2023/2024

May 2024

Dear Parents & Carers,

I hope you are well. Here are a few updates and additional dates for your diary.



**MOMENTS
MATTER,
ATTENDANCE
COUNTS.**

Staffing Update

At the end of this half term, we will be saying good bye to Mrs Barlow who has worked at Newton Hill for over 20 years. Congratulations on a well-deserved retirement. We wish you many happy and healthy years enjoying your free time.

We will also be saying good bye to Mr Butterill who is also retiring this week. Mr Butterill has been our caretaker for the past three years and has been busy looking after our school. Mr Butterill is looking forward to not getting up as early and enjoying some time outside.

Thank you to Mrs Barlow and Mr Butterill for all their hard work at Newton Hill Community School.

We have recruited a new caretaker and Mr White will work with Mr Butterill this week.

Sun Safety

As the weather finally improves, please ensure you apply sun cream to your child before school. Children can bring a named roll-on sun cream (no aerosols/pumps or sprays) to apply at school. Please remember to send a water bottle every day and a sun hat. We will monitor the weather and if required we will take breaks inside or in the shade.

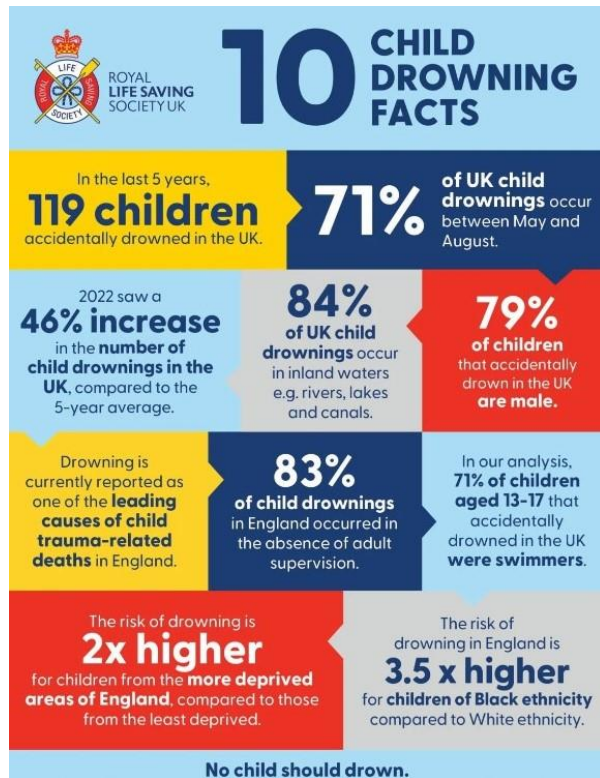
Water Safety

This term we will be revisiting water safety with the children. We ask that you also talk to your child at home about keeping safe and what to do in an emergency.

Wakefield Safeguarding Partnership Information:

Water safety is important throughout the year, but more so as the weather starts to get warmer and more children are tempted to swim/play in open water sites. Drowning accidents are especially high in the summer months and over the last few years, there has been too many tragedies that could have been avoided. See the poster below for 10 shocking facts in relation to child drownings.

Please check your homes for drowning risks. Drowning can happen very quickly and in less than 2cm of water, so filled bath tubs, swimming pools, hot tubs, garden ponds and even buckets of water can be dangerous.



RNLI - What to do in an Emergency?



FLOAT TO LIVE

- 1. Fight your instinct to thrash around**
First keep calm and try not to panic, your instinct will be to swim hard, don't
- 2. Lean back**
Lay on your back and **float like a starfish** if you get into trouble in the water, breathe slowly, then you can make a plan or swim to safety if possible
- 3. Gentle movements**
If you need to, gently move your arms and legs in a sculling motion (a bit like when using an oar in a boat)
- 4. Catch your breath**
Float until you can control your breathing. Do this for 60-90seconds or until you feel calm
- 5. Now think about how to get out**
Only now can you think about the next steps

Just a reminder about Lumi Nova - please see the additional leaflet attached for more information.

Digital therapy enabling children to self manage their worries.

LUMI NOVA
TALES OF COURAGE

- ✓ For ages 7-12 yrs
- ✓ Low-moderate anxiety
- ✓ NICE recommended

Get free Access

luminova.app/wakefield



In partnership with



Not recommended for use with children who have severe anxiety, are in crisis, have suicidal thoughts or are at risk of self harming without clinical supervision. See instructions for use: bit.ly/luminova-ifu

Summer Fair

Friday 17th May is an optional non-uniform day in exchange for items for our summer fair. We ask that children wear suitable and appropriate clothing and footwear for school. For more information, please refer to previous letter from FOTS.

FRIENDS OF THE SCHOOL

Newsletter – May 2024



Summer fair

Thursday 13th June 2024 at 3:30pm

Spread a little sunshine

We understand that everyone is always busy, but to make our Summer Fair a huge success we need your help. Please find below ways in which you can contribute. Every contribution counts and the more we receive the more successful our fair will be.

Tombola prizes

On Friday 17th May we will be having a non-uniform day. On this day, the children can come to school wearing non-uniform in return for a raffle contribution. Please ensure that all donations items are new or unused.

Donations include:

- ✚ Tombola prizes
- ✚ Teddies
- ✚ Bottles (non-alcoholic)
- ✚ Sweets, treats and chocolate

We will also continue to accept donations until we break up for half term on Friday 24th May

Mental Health Week

Next week, we will be celebrating Mental Health Week. On Friday 24th May we would like to invite everyone to 'Wear it Green' to celebrate mental health week. We appreciate not everyone has something green – so please feel free to wear any bright colours.



Movement can have positive effects on mental health by reducing stress and anxiety and improving mood and enhancing sleep and cognitive function. Children will be doing an assembly on how they can be active to support their mental health during the week. They will also be taking part in physical activities such as Yoga, star jumps, daily mile and practising breathing techniques throughout the week.



Fitness Fortnight & Sports Days

The dates for our Fitness Weeks and Sports Days are listed in the table below.

We ask that for Sports Days children wear their PE uniform kit which is a plain white T shirt and plain blue/black shorts.

As the children will need their PE kit throughout the Fitness week children may wear other **plain** shorts and T-shirts if needed. Further details will follow from each Key Stage.

Please use the gate on **Fourth Avenue** for entry to school. Please note that no other gates will be open. Please do not use the main entrance or the school car park. The gate will be open after lunchtime ends at 1:10pm. You may wish to bring your own chairs/rugs.

Children will also need a water bottle, a sun hat and sun cream. If it rains, sports days will have to be postponed due to health and safety. We will endeavour to rearrange these dates should this be the case. We have our fingers crossed for lovely weather.

Entry to School

Unless you have prior permission, please do not use the car park/main entrance for drop offs/pick up due to safeguarding. School doors are open at 8:50 and close at 9:00am. The gates remain open until 9:10am. If you use the main entrance, you will be required to complete a form and arrivals at the main entrance will be monitored. Thank you for your cooperation.

Forms

There is a new page on the school website under 'Parent Zone' which has useful forms and information.

Parent Code of Conduct

Please find attached as a reminder of expectations and for reference. Thank you.

<u>Dates for your diary</u>	<u>Event</u>
INSET Days 2023/2024 (School is closed on the following days).	Monday 4 th September Monday 20 th November Friday 22 nd December Thursday 2 nd May (Polling Day) Monday 22 nd July
Friday 17 th May	Optional non-uniform for Summer Fair Donations
Friday 24 th May	Wear it Green – Optional non-uniform for Mental Health Week. All bright colours welcome.
Friday 24 th May	School breaks up for half term
Monday 3 rd June	School Opens for Term 3b
Thursday 13 th June	NHCS Summer Fair 3:30pm
Week commencing 17 th June	EYFS & KS1 Fitness Week
Thursday 20 th June	Reception Class Sports Day 1:15pm
Friday 21 st June	KS1 Sports Day 1:15pm
Week commencing 24 th June	KS2 Fitness Week
Monday 24 th , Tuesday 25 th and Wednesday 26 th June	LKS2 Stone Age Visit (Y3/4, Y4 and Y3)
Wednesday 26 th June	Nursery Sports Day - 9:15am
Friday 28 th June	KS2 Sports Day 1:15pm
Tuesday 2 nd July at 9:30 and a repeat show on Wednesday 3 rd July at 5pm	Year 6 Performance (Y6 Parents & Carers)
Friday 19 th July	9:30 am Year 6 Final Assembly (Y6 Parents & Carers)
Friday 19 th July	School breaks up for summer
Monday 22 nd July	INSET Day

Assessment Calendar

Below are the key dates for statutory assessments in school.

Telephone: 01924 303680 admin@newton-hill.org.uk www.newtonhill.wakefield.sch.uk

Year Group	Dates	Assessment
1	Monday 10 th -Friday 14 th June	Phonic Screening Check
4	Monday 3 rd June -Friday 14 th June	Multiplication Times table Check6
6	Monday 13 th May to Thursday 16 th May	Statutory KS2 Tests (SATs)

This is the approved calendar for 24/25.

*Please note our INSET days for 2024/2025 will follow.



APPROVED SCHOOL CALENDAR 2024/25

M	T	W	T	F	S	S
			1	2	3	4
5	6	7	8	9	10	11
12	13	14	15	16	17	18
19	20	21	22	23	24	25
26	27	28	29	30	31	

M	T	W	T	F	S	S
						1
2	3	4	5	6	7	8
9	10	11	12	13	14	15
16	17	18	19	20	21	22
23	24	25	26	27	28	29
30						

M	T	W	T	F	S	S
	1	2	3	4	5	6
7	8	9	10	11	12	13
14	15	16	17	18	19	20
21	22	23	24	25	26	27
28	29	30	31			

M	T	W	T	F	S	S
				1	2	3
4	5	6	7	8	9	10
11	12	13	14	15	16	17
18	19	20	21	22	23	24
25	26	27	28	29	30	

M	T	W	T	F	S	S
						1
2	3	4	5	6	7	8
9	10	11	12	13	14	15
16	17	18	19	20	21	22
23	24	25	26	27	28	29
30	31					

M	T	W	T	F	S	S
		1	2	3	4	5
6	7	8	9	10	11	12
13	14	15	16	17	18	19
20	21	22	23	24	25	26
27	28	29	30	31		

M	T	W	T	F	S	S
					1	2
3	4	5	6	7	8	9
10	11	12	13	14	15	16
17	18	19	20	21	22	23
24	25	26	27	28		

M	T	W	T	F	S	S
					1	2
3	4	5	6	7	8	9
10	11	12	13	14	15	16
17	18	19	20	21	22	23
24	25	26	27	28	29	30
31						

M	T	W	T	F	S	S
	1	2	3	4	5	6
7	8	9	10	11	12	13
14	15	16	17	18	19	20
21	22	23	24	25	26	27
28	29	30				

M	T	W	T	F	S	S
			1	2	3	4
5	6	7	8	9	10	11
12	13	14	15	16	17	18
19	20	21	22	23	24	25
26	27	28	29	30	31	

M	T	W	T	F	S	S
						1
2	3	4	5	6	7	8
9	10	11	12	13	14	15
16	17	18	19	20	21	22
23	24	25	26	27	28	29
30						

M	T	W	T	F	S	S
	1	2	3	4	5	6
7	8	9	10	11	12	13
14	15	16	17	18	19	20
21	22	23	24	25	26	27
28	29	30	31			

- = Bank Holidays
- = School Holidays
- = There are currently no scheduled elections although schools are asked to consider reserving an INSET day in case of any unscheduled elections. Schools will need the authorisation of the Returning Officer if they are to be used as a Polling Station and wish to remain open on this day. Otherwise schools used as a polling station should be closed for INSET. Schools not used for election purposes may arrange alternative closures for INSET. Individual schools may decide the dates of the remaining 4 INSET dates.

Number of pupil days:	195
Less INSET days to be fixed:	5
Total number of pupil days:	190

As always, if you have any questions or concerns, please do not hesitate to contact school. Thank you for your continued support.

Kind regards,

Mrs Wheatley & all the staff at Newton Hill.

For your reference:

Attendance

Please can you let school know if your child is going to be absent from school.

If we do not know the reason why your child is absent, we will follow our procedures - this is a telephone call to all contacts and a home visit. If we are unable to make contact with you, we will refer the absence to the local authority. If you know your child is going to be absent, please complete an absence request form (available from the school office). Please note holidays in term time are not permitted. Following Local Authority guidance, penalty notices may be issued for holidays taken in term time. If your child is absent from school, please let the school office know as soon as possible by leaving a voicemail through the school telephone system or emailing admin@newton-hill.org.uk. Thank you for your cooperation.



Free School Meals

If your circumstances have changed you may be eligible for Free School Meals (FSM) until Year 6, please contact school as the application process is changing. There is no difference for how children order or receive meals if they are eligible for FSM. If your child receives FSM (Reception to Year 6) the school will also receive additional funding to support your child. Children in receipt of FSM also received confidential support with educational visits.

School meals for children in Reception and KS1 are FREE – this is part of the universal free school meal offer.

Our Local Community

Just a polite reminder to park safely and to be respectful to our local residents when picking up and dropping off particularly on Newton Avenue and East Street.

Thank you.



School Uniform

Please can we ask that all uniform/property is clearly labelled.

Thank you to everyone who follows our uniform expectations. The pre-loved uniform is always available – please contact Mrs Dundas for further information or support. We have a range of uniform – all ages. Please make use of the uniform available - all requests will be dealt with confidentially.

Safeguarding

If you have any safeguarding concerns or need any support or advice, please do not hesitate to contact the school.



Our Designated Safeguarding Leads (DSL) are: Mrs Wheatley, Mrs Whelerton, Mrs Luck, Mr Paine, Mrs Dundas, Mrs Myton, Miss Land and Mrs Bashforth.

<https://www.nspcc.org.uk/keeping-children-safe/online-safety/> This website offers advice and guides for parents which you may find useful.

<https://www.nspcc.org.uk/keeping-children-safe/support-for-parents/pants-underwear-rule/>

If you need support or advice, you can also contact Wakefield Social Care Direct on 0345 8 503 503. There are other numbers you may find useful on our school website under Safeguarding.

Keeping Safe Online

You may find the following sites and information useful:

[Keep Children Safe Online: Information, Advice, Support - Internet Matters](#)

[What is the metaverse? - What parents need to know | Internet Matters](#)

[Social Media Checklists | SWGfL](#)

Mental Health Team

We have a number of staff members who are mental health first aiders who can offer advice and support for your child and you. Please contact the school if you would like any support.



August 2023						
M	T	W	T	F	S	S
	1	2	3	4	5	6
7	8	9	10	11	12	13
14	15	16	17	18	19	20
21	22	23	24	25	26	27
28	29	30	31			

September 2023						
M	T	W	T	F	S	S
				1	2	3
4	5	6	7	8	9	10
11	12	13	14	15	16	17
18	19	20	21	22	23	24
25	26	27	28	29	30	

October 2023						
M	T	W	T	F	S	S
						1
2	3	4	5	6	7	8
9	10	11	12	13	14	15
16	17	18	19	20	21	22
23	24	25	26	27	28	29
30	31					

November 2023						
M	T	W	T	F	S	S
		1	2	3	4	5
6	7	8	9	10	11	12
13	14	15	16	17	18	19
20	21	22	23	24	25	26
27	28	29	30			

December 2023						
M	T	W	T	F	S	S
				1	2	3
4	5	6	7	8	9	10
11	12	13	14	15	16	17
18	19	20	21	22	23	24
25	26	27	28	29	30	31

January 2024						
M	T	W	T	F	S	S
1	2	3	4	5	6	7
8	9	10	11	12	13	14
15	16	17	18	19	20	21
22	23	24	25	26	27	28
29	30	31				

February 2024						
M	T	W	T	F	S	S
			1	2	3	4
5	6	7	8	9	10	11
12	13	14	15	16	17	18
19	20	21	22	23	24	25
26	27	28	29			

March 2024						
M	T	W	T	F	S	S
				1	2	3
4	5	6	7	8	9	10
11	12	13	14	15	16	17
18	19	20	21	22	23	24
25	26	27	28	29	30	31

April 2024						
M	T	W	T	F	S	S
1	2	3	4	5	6	7
8	9	10	11	12	13	14
15	16	17	18	19	20	21
22	23	24	25	26	27	28
29	30					

May 2024						
M	T	W	T	F	S	S
		1	2	3	4	5
6	7	8	9	10	11	12
13	14	15	16	17	18	19
20	21	22	23	24	25	26
27	28	29	30	31		

June 2024						
M	T	W	T	F	S	S
					1	2
3	4	5	6	7	8	9
10	11	12	13	14	15	16
17	18	19	20	21	22	23
24	25	26	27	28	29	30

July 2024						
M	T	W	T	F	S	S
1	2	3	4	5	6	7
8	9	10	11	12	13	14
15	16	17	18	19	20	21
22	23	24	25	26	27	28
29	30	31				

- = Bank Holidays
- = School Holidays
- = UK Parliamentary, West Yorkshire Combined Authority Mayoral and District Council Elections (schools will need the authorisation of the Returning Officer if they are to be used as a Polling Station and wish to remain open on this day. Otherwise schools used as a polling station should be closed for INSET). Schools not used for election purposes may arrange alternative closures for INSET. Individual schools may decide the dates of the remaining 4 INSET dates.

Number of pupil days:	195
Less INSET days to be fixed:	5
Total number of pupil days:	190