

Ready for Learning - Ready for Life



**MOMENTS
MATTER,
ATTENDANCE
COUNTS.**



Newton Hill Community School Update
2024/2025

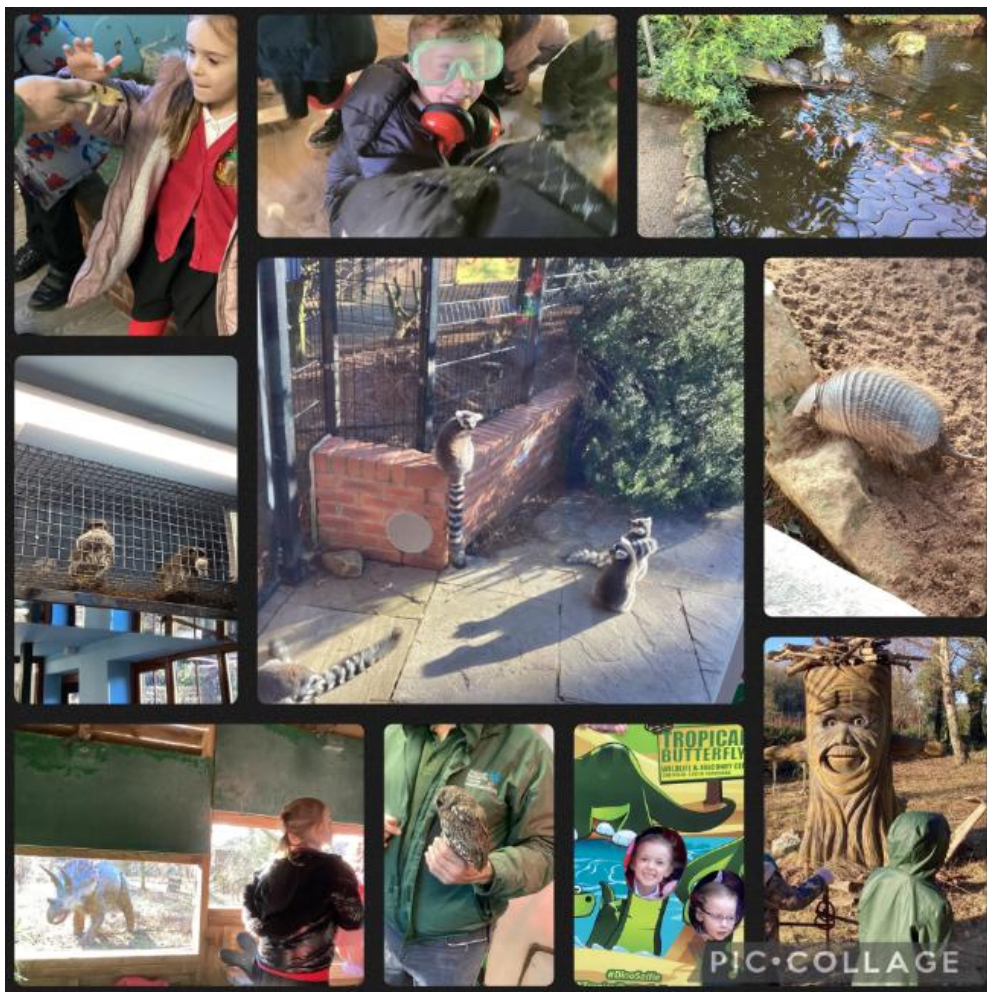
February 2025 - End of Term 2a

Dear Parents & Carers,

Although it has been a short half term, it has been incredibly busy in school! We hope you enjoyed visiting the school this week for our open session. It was lovely to see the children proudly showing their work and giving guided tours around their classroom. Thank you to everyone for your positive messages.

Our Year 5 choir performed at Young Voices this week joining 4000 children at Sheffield Arena. They had an amazing time!

Keep updated with all our news and follow Newton Hill School on Facebook.



Class Email Update: The class email system was originally set up during Covid and we continued to offer this as a contact when school resumed as normal. After a review of staff workload and staff wellbeing, we will no longer be offering the class email system directly to class teachers after half term. If you need to email school, your email will now need to be directed to the office through admin@newton-hill.org.uk . Emails received will be reviewed and sent to appropriate staff if and as required. Please note that the admin email is not monitored out of school hours, during weekends or holidays. Thank you.

Wishing everyone a lovely half term.

Mrs Wheatley and all the staff at Newton Hill Community School





PIC • COLLAGE

Parent Code of Conduct

Our parent code of conduct is attached for your reference ahead of Term 2b.

Local Residents

We are still receiving a high volume of calls to school from our neighbours to report blocked drive ways on East Street at drop off and pick up times. Residents have also reported aggressive behaviour and disrespectful language. If you do drive to school, please be mindful of where you park.

School Car Park Update

Please do not use the school car park for any late drop offs or early/late collections. The school car park is for staff and authorised visitors only. There is no access to the school car park for parents/carers. Exceptions will be made if you are collecting your child who has become ill at school. Thank you for your understanding.

Newts Drop off/Pick Up:

There will be no access to the school car park for picking up or dropping off at Newts. **Please ensure all family members who collect/drop off are aware of the changes.**

Attendance

Please let school know if your child is going to be absent from school. If your child is absent from school, please let the school office know as soon as possible by leaving a voicemail through the school telephone system or emailing admin@newton-hill.org.uk. There is an option to leave a message for all absences you do not have to wait until school is open. Thank you for your cooperation.



If we do not know the reason why your child is absent, we will follow our procedures - this is a telephone call to all contacts and if there is no response school will conduct a home visit. If we are unable to make contact with you, we will refer the absence to the local authority.

If you know your child is going to be absent, please complete an absence request form (available from the school office). Please note holidays in term time are not permitted. Following Local Authority guidance, penalty notices may be issued for holidays taken in term time. For more information see the poster below regarding penalty notices. Please note - school receives no financial gain from referring holidays to the Local Authority.

School Field

As the weather changes, we are limited to the times we can use our school fields. **Please can we ask that you do not cut across the grass at drop off and pick up as the grass and mud quickly spreads through school onto our floors and carpets.**

Entry to School

School doors are open at 8:50 and close at 9:00am. **The pedestrian gates on East Street and Fourth Ave will close at 9:00am.** If you use the main entrance, you will be required to complete a form and arrivals at the main entrance will be monitored.

School Uniform

Thank you to everyone who follows our uniform expectations.

The pre-loved uniform is always available - please contact the school office for further information or support through admin@newton-hill.org.uk. We have a range of uniform for all ages so please make use of the free uniform available - all requests will be dealt with confidentially.

PE Kits

On PE days children can continue to wear their PE kit to school all day. **Please note that the PE kit should be a plain white T-shirt, plain navy/black shorts and a plain navy/black tracksuit top, football tops/kits are not permitted.**

Packed Lunches

In line with our lunch box policy, only cold food can be brought to school. Hot food/liquids are not permitted. Please note that all unwanted food etc will come home in your child's lunchbox. This is to enable you to monitor the contents of your child's lunchbox.

Forms

There is a page on the school website under 'Parent Zone' which has useful forms and information.

Music Update

There are still some spaces available for *Get into Guitar* and *Rocksteady*. If your child is interested, please contact the companies direct. Please contact school if you require the contact details.

Safeguarding

If you have any safeguarding concerns or need any support or advice, please do not hesitate to contact the school.



Our Designated Safeguarding Leads (DSL) are: Mrs Wheatley, Mrs Whelerton, Mrs Luck, Mrs Myton and Miss Land.

<https://www.nspcc.org.uk/keeping-children-safe/online-safety/> This website offers advice and guides for parents which you may find useful.

<https://www.nspcc.org.uk/keeping-children-safe/support-for-parents/pants-underwear-rule/>

If you need support or advice, you can also contact Wakefield Social Care Direct on 0345 8 503 503. There are other numbers you may find useful on our school website under Safeguarding.

Keeping Safe Online

You may find the following sites and information useful:

[Keep Children Safe Online: Information, Advice, Support - Internet Matters](#)

[What is the metaverse? - What parents need to know | Internet Matters](#)

[Social Media Checklists | SWGfL](#)

Mental Health Team

We have a number of staff members who are mental health first aiders who can offer advice and support. Please contact the school if you would like any support.



<u>Dates for your diary</u>	<u>Event</u>
<i>Please note that dates for educational visits/workshops will be shared with you directly through parent hub.</i>	
INSET Days 2024/2025 (School is closed on the following days).	Monday 2 nd September Friday 25 th October Friday 20 th December Friday 24 th January Thursday 8 th May <i>(We have been notified recently that the school is not required as a polling station on 8th May, however we will not be changing this INSET day, and school will be closed to pupils.)</i>
Wednesday 12 th February - Friday 14 th February	Year 6 Residential Trip
Wednesday 26 th and Thursday 27 th February	KS1 Aboriginal Art Workshop
February/March 2025	SWAP – Sip Water Avoid Pop workshops for Year 5 delivered by the Health Team from Wakefield Council
Scholastic Book Fair	Monday 3 rd March to Friday 7 th March
Tuesday 4 th March and Wednesday 5 th March	Parent consultation meetings 3:30-6:00pm
Thursday 6 th March	World Book Day – Please note, we will <u>not</u> be asking children to dress as book characters on this day. There will be a variety of activities and further details will follow.

August 2024						
M	T	W	T	F	S	S
			1	2	3	4
5	6	7	8	9	10	11
12	13	14	15	16	17	18
19	20	21	22	23	24	25
26	27	28	29	30	31	

September 2024 (21 Days)						
M	T	W	T	F	S	S
						1
2	3	4	5	6	7	8
9	10	11	12	13	14	15
16	17	18	19	20	21	22
23	24	25	26	27	28	29
30						

October 2024 (19 Days)						
M	T	W	T	F	S	S
	1	2	3	4	5	6
7	8	9	10	11	12	13
14	15	16	17	18	19	20
21	22	23	24	25	26	27
28	29	30	31			

November 2024 (20 Days)						
M	T	W	T	F	S	S
				1	2	3
4	5	6	7	8	9	10
11	12	13	14	15	16	17
18	19	20	21	22	23	24
25	26	27	28	29	30	

December 2024 (15 Days)						
M	T	W	T	F	S	S
						1
2	3	4	5	6	7	8
9	10	11	12	13	14	15
16	17	18	19	20	21	22
23	24	25	26	27	28	29
30	31					

January 2025 (20 Days)						
M	T	W	T	F	S	S
		1	2	3	4	5
6	7	8	9	10	11	12
13	14	15	16	17	18	19
20	21	22	23	24	25	26
27	28	29	30	31		

February 2025 (15 Days)						
M	T	W	T	F	S	S
					1	2
3	4	5	6	7	8	9
10	11	12	13	14	15	16
17	18	19	20	21	22	23
24	25	26	27	28		

March 2025 (21 Days)						
M	T	W	T	F	S	S
					1	2
3	4	5	6	7	8	9
10	11	12	13	14	15	16
17	18	19	20	21	22	23
24	25	26	27	28	29	30
31						

April 2025 (11 Days)						
M	T	W	T	F	S	S
	1	2	3	4	5	6
7	8	9	10	11	12	13
14	15	16	17	18	19	20
21	22	23	24	25	26	27
28	29	30				

May 2025 (16 Days)						
M	T	W	T	F	S	S
			1	2	3	4
5	6	7	8	9	10	11
12	13	14	15	16	17	18
19	20	21	22	23	24	25
26	27	28	29	30	31	

June 2025 (21 Days)						
M	T	W	T	F	S	S
						1
2	3	4	5	6	7	8
9	10	11	12	13	14	15
16	17	18	19	20	21	22
23	24	25	26	27	28	29
30						

July 2025 (16 Days)						
M	T	W	T	F	S	S
	1	2	3	4	5	6
7	8	9	10	11	12	13
14	15	16	17	18	19	20
21	22	23	24	25	26	27
28	29	30	31			

- = Bank Holidays
- = School Holidays
- = There are currently no scheduled elections although schools are asked to consider reserving an INSET day in case of any unscheduled elections. Schools will need the authorisation of the Returning Officer if they are to be used as a Polling Station and wish to remain open on this day. Otherwise schools used as a polling station should be closed for INSET. Schools not used for election purposes may arrange alternative closures for INSET. Individual schools may decide the dates of the remaining 4 INSET dates.

Number of pupil days:	195
Less INSET days to be fixed:	5
Total number of pupil days:	190

PENALTY NOTICE FINES FOR SCHOOL ATTENDANCE ARE CHANGING!

With the introduction of the New National Framework for Penalty Notices, the following changes will come into force on 19th August 2024.

PENALTY NOTICES WILL BE ISSUED FOR

Term time leave: Penalty Notice Fines will be issued for Term Time Leave of 5 or more consecutive days

10 sessions of unauthorised absence in a 10 week period: A Penalty Notice may be considered/issued when a pupil has had 10 sessions of unauthorised absence in a 10 week* period.

*School Week's

PER PARENT/PER CHILD

Penalty Notice Fines will continue to be issued per parent per child.

For example: 3 Siblings absent for term time leave, would result in each parent receiving 3 separate fines.

FIRST OFFENCE

The first time a Penalty Notice is issued for a Term Time Holiday or Irregular School Attendance the Penalty Notice will be charged at:

£160 per parent, per child if paid within 28 days of issue, reducing to £80 if paid within 21 days**.

SECOND OFFENCE (within 3 years of the First Offence)

Where it is deemed appropriate to issue a second Penalty Notice to the same parent for the same pupil within 3 years of the first notice, the second Penalty Notice will be charged at:

£160 if paid within 28 days (no reduced fee for paying early).

(**Unpaid Penalty Notice's after 28 days may result in a parental prosecution)

THIRD OFFENCE (within 3 years of the First Offence)

On the third time that an offence is committed for either a Term Time Holiday and / or Irregular Attendance a Penalty Notice will not be issued, the case may proceed straight to Parental Prosecution under the Single Justice Procedure. If found guilty of the offence of 'Failure to send a child to school' the Magistrates can impose a fine up to £1000.