

## Newton Hill Community School Update - 2024/2025

October 2024

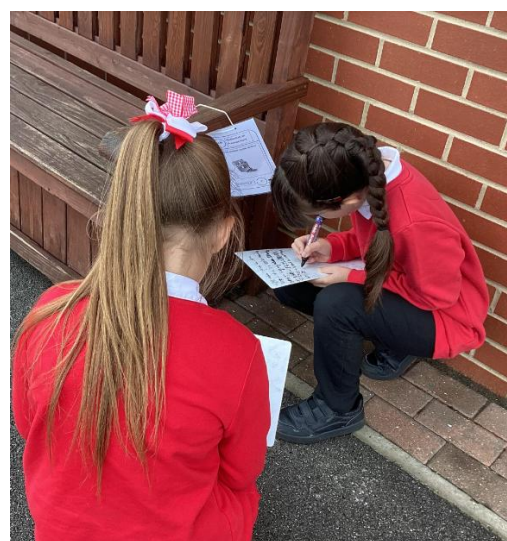
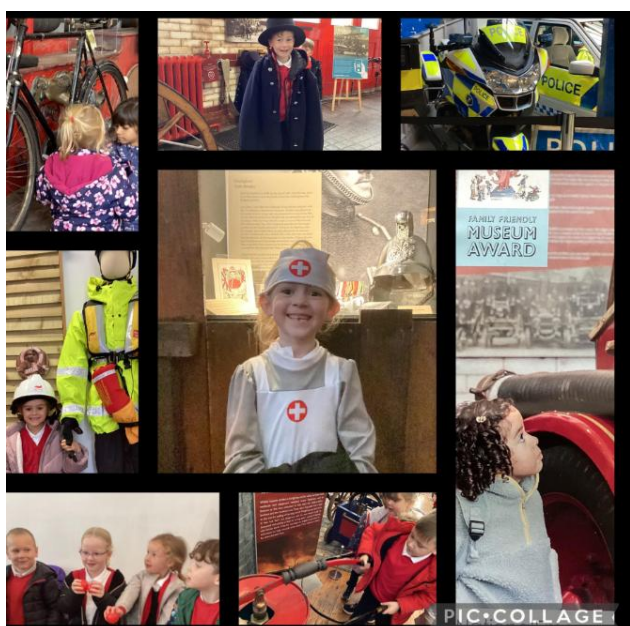
Dear Parents & Carers,

I hope you are well. Please find an update below and a reminder of dates for your diary. **School breaks up for half term on Thursday 23<sup>rd</sup> October. Friday 24<sup>th</sup> October is an INSET day.** School reopens on Monday 4<sup>th</sup> November.

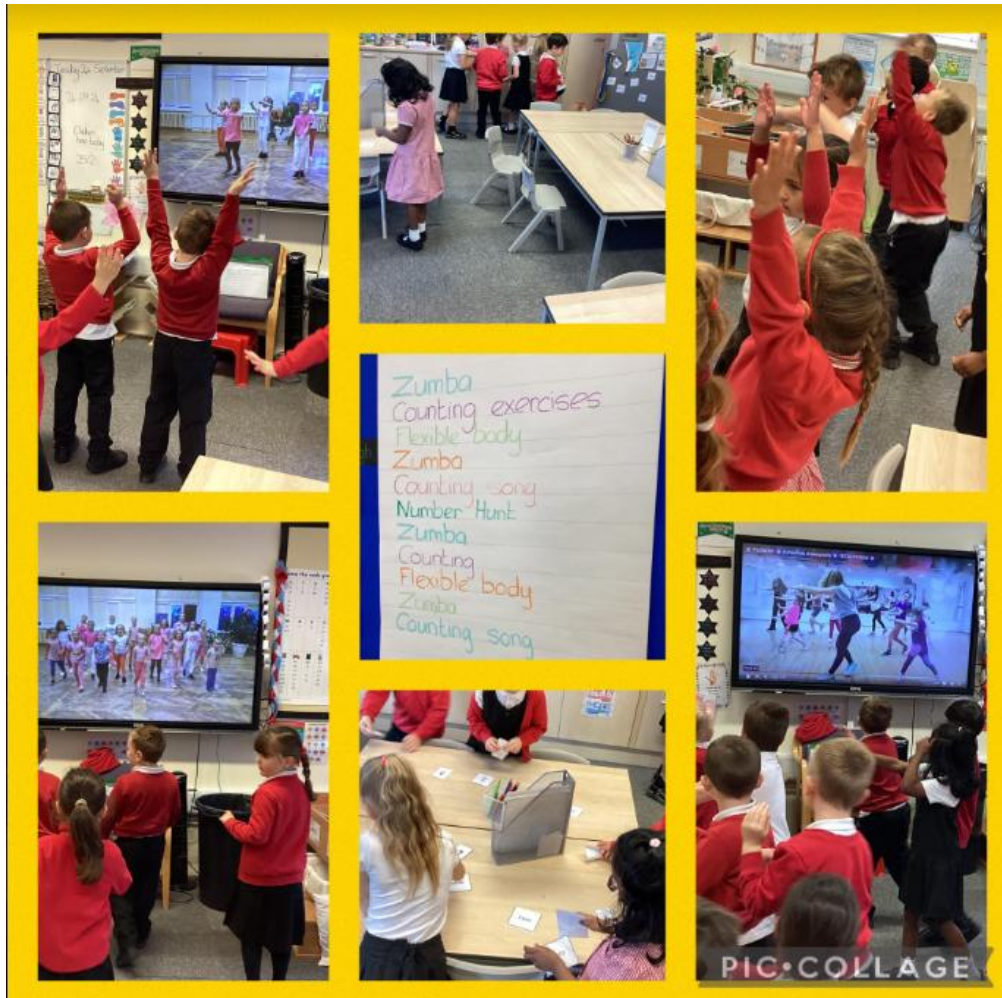
**MOMENTS  
MATTER,  
ATTENDANCE  
COUNTS.**

We have had a busy half term and the children have been working incredibly hard. Thank you to everyone who supported our book fair and other events this half term.

Huge congratulations to our amazing Year 4 dodgeball team who were victorious in their festival where they won all 12 of their matches!









### Staffing Update

Last week we said goodbye to Mrs Dundas. We are delighted to announce that Miss Land is our new Learning Mentor. We would also like to welcome Mrs Walker as our new school business manager due to Mrs Bashford's promotion to a new role out of school.

### Entry to School

Please note unless you have prior permission, please do not use the car park/main entrance for drop offs/pick up due to safeguarding. School doors are open at 8:50 and close at 9:00am. **The gates will close at 9:00am.** If you use the main entrance, you will be required to complete a form and arrivals at the main entrance will be monitored.

### Newts Drop off/Pick Up:

We do allow parents to use the school car park for drop off/pick up from Newts. However, we would like to remind you of the expectations for this privilege. Access to the school car park will be withdrawn if these rules are not followed. Thank you for your cooperation.

- Please remember to drive slowly into and out of school and up/down the driveway. 5mph limit.
- Give way to vehicles coming into school even if this means you have to reverse back into school. Cars cannot reverse onto Leeds Road.
- You must walk your child to the Newts door through the car park.
- If you are using Newts, please do not use the car park at the front of school.
- Do not use the disabled bays - unless you have a blue badge displayed.
- Give way to pedestrians who are walking on Leeds Road - they have the right of way.



**Car park  
speed limit**

**School Field:** As the weather is starting to change, we are limited to the time we have to use our school fields. Please can we ask that you do not cut across the grass at drop off and pick up as the grass and mud quickly spreads through school onto our floors and carpets. Thank you.

### Local Residents

We are receiving a high volume of calls to school from our neighbours to report blocked drive ways on East Street and as a result of this disrespectful language. If you do arrive at school/collect from school in a vehicle, please be mindful of where you are parking.



### School Uniform

Thank you to everyone who follows our uniform expectations.

The pre-loved uniform is always available - please contact the school office for further information or support through [admin@newton-hill.org.uk](mailto:admin@newton-hill.org.uk). We have a range of uniform for all ages so please make use of the free uniform available - all requests will be dealt with confidentially.

## **PE Kits**

On PE days children can continue to wear their PE kit to school all day. **Please note that the PE kit should be a plain white T-shirt, plain navy/black shorts and a plain navy/black tracksuit top, football tops/kits are not permitted.**

## **Packed Lunches**

In line with our lunch box policy, only cold food can be brought to school. Hot food/liquids are not permitted. Please note that all unwanted food etc will come home in your child's lunchbox. This is to enable you to monitor the contents of your child's lunchbox.

## **Forms**

There is a page on the school website under 'Parent Zone' which has useful forms and information.

## **Music Update**

There are still some spaces available for Get into Guitar and Rocksteady. If your child is interested, please contact the companies direct. Please contact school if you require the contact details.

## **Harvest**

Thank you to everyone who sent Harvest donations to school. We did not receive any nominations for senior citizens in the area and therefore we have donated everything to St Catherine's food bank in Wakefield.

## **Attendance**

### **Please can you let school know if your child is going to be absent from school.**

If we do not know the reason why your child is absent, we will follow our procedures - this is a telephone call to all contacts and a home visit. If we are unable to make contact with you, we will refer the absence to the local authority.



If you know your child is going to be absent, please complete an absence request form (available from the school office). Please note holidays in term time are not permitted. Following Local Authority guidance, penalty notices may be issued for holidays taken in term time. For more information see the poster below regarding penalty notices. If your child is absent from school, please let the school office know as soon as possible by leaving a voicemail through the school telephone system or emailing [admin@newton-hill.org.uk](mailto:admin@newton-hill.org.uk). Thank you for your cooperation.

## **Safeguarding**

If you have any safeguarding concerns or need any support or advice, please do not hesitate to contact the school.



Our Designated Safeguarding Leads (DSL) are: Mrs Wheatley, Mrs Whelerton, Mrs Luck, Mrs Myton and Miss Land.

<https://www.nspcc.org.uk/keeping-children-safe/online-safety/> This website offers advice and guides for parents which you may find useful.

<https://www.nspcc.org.uk/keeping-children-safe/support-for-parents/pants-underwear-rule/>

If you need support or advice, you can also contact Wakefield Social Care Direct on 0345 8 503 503. There are other numbers you may find useful on our school website under Safeguarding.

### **Keeping Safe Online**

You may find the following sites and information useful:

[Keep Children Safe Online: Information, Advice, Support - Internet Matters](#)

[What is the metaverse? - What parents need to know | Internet Matters](#)

[Social Media Checklists | SWGfL](#)

### **Mental Health Team**

We have a number of staff members who are mental health first aiders who can offer advice and support for your child and you. Please contact the school if you would like any support.



Please do not hesitate to contact school if you have any questions or concerns.

Thank you for your continued support.

Kind regards,  
Mrs Wheatley

As we enter the Autumn term, please see below for our procedures for unplanned school closures and adverse weather.

### **Unplanned School Closures - Snow/Adverse Weather**

Although snow is welcomed by our children it can, as you know, cause issues with schools. We will always aim to notify you of any closures due to adverse weather at the earliest opportunity and appreciate that this may be at short notice.

In the unlikely event of a school closure, for adverse weather or for reasons out of our control, we will contact you via Parent Hub. We may also display messages/updates on our school website [www.newtonhill.wakefield.sch.uk](http://www.newtonhill.wakefield.sch.uk).

We will always do our best to stay open, but if for any reason we have to close *during the day* we will contact you via Parent Hub, A member of the Leadership Team will always stay on site until all children have been collected.

### **Newts Provision - Adverse Weather**

During adverse weather conditions, various considerations need to be assessed to see if school can open safely - for example the number of members of staff who can get to work safely, site safety and access.

Therefore, if there are any occasions of adverse weather (snow/treacherous conditions), Newts provision will not be open for breakfast club. This is to allow sufficient time for school to assess if school can open safely and if there are enough staff able to travel to school safely.

Messages will be sent to all parents via Parent Hub as reminders should this be the case and we will always give advance notice if weather warnings are issued. We will aim to notify you by 7am should this be the case. We will always try to stay open during adverse weather conditions and school may offer a later opening time rather than a full closure depending on the circumstances.

Dates for your diary	Event
<i>Please note that dates for educational visits will be shared with you through directly through parent hub.</i>	
INSET Days 2024/2025 (School is closed on the following days).	Monday 2 <sup>nd</sup> September Friday 25 <sup>th</sup> October Friday 20 <sup>th</sup> December Friday 24 <sup>th</sup> January Thursday 8 <sup>th</sup> May (Polling Day)
Friday 24 <sup>th</sup> October	INSET day - school is closed
Monday 4 <sup>th</sup> November	Term 1b - School open
Week beginning Monday 11 <sup>th</sup> November	Anti-Bullying Week
Wednesday 13 <sup>th</sup> November	Open session 5:00-6:00pm for prospective parents for September 2025 Reception starters. Please contact the school office to book a place.
Wednesday 11 <sup>th</sup> December	Y3/4 Christmas Concert for parents/carers 2:30pm *Tickets will be allocated for each family
Thursday 12 <sup>th</sup> December	EYFS (Nursery & Reception) Christmas Song Medley for parents/carers at 9:15 *Tickets will be allocated for each family
Friday 13 <sup>th</sup> December	KS1 Christmas Show for parents at 9:30 *Tickets will be allocated for each family
Monday 16 <sup>th</sup> December	Y5/6 Christmas Sing-a-long with Parents & Carers at 2:45pm *This will be outside - weather permitting.
Friday 13 <sup>th</sup> December	Christmas Jumper Day - children can wear Christmas jumpers/outfits on this day. This is an optional non-uniform day. All donations will go to Save the Children.
Thursday 19 <sup>th</sup> December	School breaks up for Christmas
Friday 20 <sup>th</sup> December	INSET Day - school is closed
Monday 6 <sup>th</sup> January	Term 2a - School Open

August 2024						
M	T	W	T	F	S	S
			1	2	3	4
5	6	7	8	9	10	11
12	13	14	15	16	17	18
19	20	21	22	23	24	25
26	27	28	29	30	31	

September 2024 (21 Days)						
M	T	W	T	F	S	S
						1
2	3	4	5	6	7	8
9	10	11	12	13	14	15
16	17	18	19	20	21	22
23	24	25	26	27	28	29
30						

October 2024 (19 Days)						
M	T	W	T	F	S	S
	1	2	3	4	5	6
7	8	9	10	11	12	13
14	15	16	17	18	19	20
21	22	23	24	25	26	27
28	29	30	31			

November 2024 (20 Days)						
M	T	W	T	F	S	S
				1	2	3
4	5	6	7	8	9	10
11	12	13	14	15	16	17
18	19	20	21	22	23	24
25	26	27	28	29	30	

December 2024 (15 Days)						
M	T	W	T	F	S	S
						1
2	3	4	5	6	7	8
9	10	11	12	13	14	15
16	17	18	19	20	21	22
23	24	25	26	27	28	29
30	31					

January 2025 (20 Days)						
M	T	W	T	F	S	S
		1	2	3	4	5
6	7	8	9	10	11	12
13	14	15	16	17	18	19
20	21	22	23	24	25	26
27	28	29	30	31		

February 2025 (15 Days)						
M	T	W	T	F	S	S
					1	2
3	4	5	6	7	8	9
10	11	12	13	14	15	16
17	18	19	20	21	22	23
24	25	26	27	28		

March 2025 (21 Days)						
M	T	W	T	F	S	S
					1	2
3	4	5	6	7	8	9
10	11	12	13	14	15	16
17	18	19	20	21	22	23
24	25	26	27	28	29	30
31						

April 2025 (11 Days)						
M	T	W	T	F	S	S
	1	2	3	4	5	6
7	8	9	10	11	12	13
14	15	16	17	18	19	20
21	22	23	24	25	26	27
28	29	30				

May 2025 (16 Days)						
M	T	W	T	F	S	S
			1	2	3	4
5	6	7	8	9	10	11
12	13	14	15	16	17	18
19	20	21	22	23	24	25
26	27	28	29	30	31	

June 2025 (21 Days)						
M	T	W	T	F	S	S
						1
2	3	4	5	6	7	8
9	10	11	12	13	14	15
16	17	18	19	20	21	22
23	24	25	26	27	28	29
30						

July 2025 (16 Days)						
M	T	W	T	F	S	S
	1	2	3	4	5	6
7	8	9	10	11	12	13
14	15	16	17	18	19	20
21	22	23	24	25	26	27
28	29	30	31			

- = Bank Holidays
- = School Holidays
- = There are currently no scheduled elections although schools are asked to consider reserving an INSET day in case of any unscheduled elections. Schools will need the authorisation of the Returning Officer if they are to be used as a Polling Station and wish to remain open on this day. Otherwise schools used as a polling station should be closed for INSET. Schools not used for election purposes may arrange alternative closures for INSET. Individual schools may decide the dates of the remaining 4 INSET dates.

Number of pupil days:	195
Less INSET days to be fixed:	5
Total number of pupil days:	190



## PENALTY NOTICE FINES FOR SCHOOL ATTENDANCE ARE CHANGING!

With the introduction of the New National Framework for Penalty Notices, the following changes will come into force on 19<sup>th</sup> August 2024.

### PENALTY NOTICES WILL BE ISSUED FOR

**Term time leave:** Penalty Notice Fines will be issued for Term Time Leave of 5 or more consecutive days

**10 sessions of unauthorised absence in a 10 week period:** A Penalty Notice may be considered/issued when a pupil has had 10 sessions of unauthorised absence in a 10 week\* period.

\*School Week's

### PER PARENT/PER CHILD

Penalty Notice Fines will continue to be issued per parent per child.

For example: 3 Siblings absent for term time leave, would result in each parent receiving 3 separate fines.

### FIRST OFFENCE

The first time a Penalty Notice is issued for a Term Time Holiday or Irregular School Attendance the Penalty Notice will be charged at:

£160 per parent, per child if paid within 28 days of issue, reducing to £80 if paid within 21 days\*\*.

### SECOND OFFENCE (within 3 years of the First Offence)

Where it is deemed appropriate to issue a second Penalty Notice to the same parent for the same pupil within 3 years of the first notice, the second Penalty Notice will be charged at:

£160 if paid within 28 days (no reduced fee for paying early).

(\*\*Unpaid Penalty Notice's after 28 days may result in a parental prosecution)

### THIRD OFFENCE (within 3 years of the First Offence)

On the third time that an offence is committed for either a Term Time Holiday and / or Irregular Attendance a Penalty Notice will not be issued, the case may proceed straight to Parental Prosecution under the Single Justice Procedure. If found guilty of the offence of 'Failure to send a child to school' the Magistrates can impose a fine up to £1000.